



# GUNJAN<sup>TM</sup>

**Our Plastic Speaks Itself**

**LEADER IN PIPING SOLUTIONS**



**All Plastic Piping Systems Under One Roof**



**Gunjan** has state of the art manufacturing facilities in plant. Our plant is certified with ISO:9001:2015 All products are manufactured in accordance with Bureau of Indian Standards (BIS) and other International specification.

We specialize in the manufacturing of uPVC Pipe & Fittings, Agri Pipe & Fittings, Casing Pipe Ribbed Screen pipes, Electric Conduit Pipes & Casing N Capping, uPVC Column Pipes, Cistern & Toilet Seat Covers, and Kitchen Sinks. Our products have successfully established their presence in the Indian market.

Established in 2023, **Gunjan Polyplast** is now among the leading manufacturers in the industry. We adhere to international standards and have the necessary facilities for casting and injection molding. Our quality assurance includes up-to-date threading and strict inspection of testing chemical and physical properties.

Our team consists of highly qualified and experienced engineers who ensure consistent quality maintenance and contribute to continuous research and development efforts. Our brand, **Gunjan** ISI Pipe Fittings, is renowned for its quality and durability across India.

Our factory is equipped with advanced and sophisticated instruments for chemical and physical testing, and we enforce rigid quality control throughout the production process to guarantee the highest possible quality in our finished products.

At **Gunjan Polyplast**, we provide a comprehensive solution for your piping system needs under one roof. We are proud to be certified ISO 9001:2015, ensuring our commitment to quality and customer satisfaction.

With **Gunjan** : You Get The Whole Package for Piping System Under One Roof.

## Rigid PVC Pipes & Fittings



UPVC Pipes for Solvent Cement Jointing & Elastomeric Rubber Ring Jointing.

**Gunjan** UPVC Pipes are manufactured in accordance with Bureau of Indian Standards specification IS:4985 with latest amendments and other international standards of DIN, BS, ASTM.

**Gunjan** manufactures UPVC Pipes in the range of 16mm to 225mm diameters in different working pressures (2.5,4,6,8,10 & 12.5 Kgf/Sq.cm) UPVC Plumbing Pipes: UPVC plain end pipe for plumbing application in buildings from 20mm 50mm conforming to IS:4985 with latest amendments.

**PVC Fittings:** Suitable Injection Moulded Fittings like Coupler, Tee, Elbow, Reducer, Endcap, MTA, FTA, etc., from 20mm to 160mm in PN6 pressure classes are available. Fabricated Fittings, like Coupler, Long Bends are available in all Pressure Classes from 40mm to 160mm.

**Applications:** Potable water supplies - Irrigation systems

## UPVC Casing Pipes for Bore/Tube Well

**Gunjan** UPVC Casing Pipes manufactures Plain Casing Pipes, Plain Screen Pipe (ribbed Casing Pipes and Ribbed Screen Pipes in accordance with the Bureau of Indian Standards specification IS:12818 with latest amendments and supplied in the following categories: CM Type(cmethum wens): 40mm 225mm nominal dia. pipes suitable for wells depth of 80 mtr-250 mtr. CS Type(shallow well): 150mm 225mm nominal dia. pipes suitable for wells with depth up to 80 mtr. The pipes have male and female trapezoidal thread ends for jointing. These pipes have high impact and compressive strengths and hence are best suited for all soils. Light weight and thread joints ease the jointing and installation very quickly and effectively.

**Applications:** Domestic, agricultural and industrial sectors for borewell water extraction purpose.





# PVC Electrical Pipes & Fittings



**Gunjan** Rigid PVC Conduits are manufactured in accordance with the Bureau of India Standards specification IS 9537 (part-3) with latest amendments in the range of 16mm to 63mm in Light, Medium and Heavy Categories. These pipes are available in FRLS category also.

**Rigid PVC Conduits Accessories:** **Gunjan** manufactures Rigid PVC Conduits Accessories like Couplers, Bends, Junction Boxes from 20mm to 40mm suitable to Electric Conduits.

**Junction Boxes & Deep Junction Boxes:** Way Terminal - Way Through - Way Tee - Way Intersection - U Way - Y Way - H Way

**Applications:** Domestic & Industrial Open / surface and concealed wiring in house residential and commercial buildings, telecommunications

# UPVC Column Pipes

**Gunjan** UPVC Column pipes are manufactured with stringent quality measures for the application of Borewell Column Pipes in Domestic, Agricultural and Industrial use. The pipes are manufactured using world class machinery and are ensured for use in higher depths and heavy loads. The pipes are ensured with Silicone Adhesive technology locking screw for safety locking of pipe with coupler. The Column Pipes are available from 1" to 4" sizes in Standard, Medium and Heavy Classes.

**Applications:** Domestic, agricultural and industrial sectors for borewell water extraction purpose.



# UPVC Plumbing Pipes & Fittings



**Gunjan** UV Stabilized Lead Free UPVC Plumbing pipes & fittings (in White colour) are from 1/2" to 1 1/4" diameter. These UPVC pipes are joined with UPVC fittings with UPVC Solvent Cement for Plumbing applications. The UPVC will pipes will be supplied in SCHD-40 & SCHD-80 Classes of ASTM D 1785. Specification and UPVC Fittings will be supplied in SCHD-80 Class of ASTM D 2467.

**Applications:** Plumbing Pipes for construction industry & water supply.

# UPVC SWR Pipes & Fittings



**Gunjan** UPVC SWR Pipes are manufactured in accordance with the Bureau of Indian Standards specification IS 13592 with latest amendments and other international standards DIN, BS, ASTM. UPVC SWR Pipes with grooved sockets for rubber ring jointing (SEAL RING). UPVC SWR Pipes with sliding sockets for solvent cement jointing (SELFIT). Sizes: 40mm, 50mm, 75mm, 90mm, 110mm & 160mm diameters in Type 'A' & Type 'B' classes

**SWR Fittings:** Suitable Fittings like Bends, Tee(Plain & Door), .1, Coupler, Traps, etc. are available, conforming to IS:14 735 to install SWR systems.

**Applications:** Soil, Waste & Rain Water Applications in Building Sectors. Type A Pipes are for use in Ventilation Pipe Work and Rain Water Applications. Type B Pipes are for use in Soil and Waste Discharge Systems.

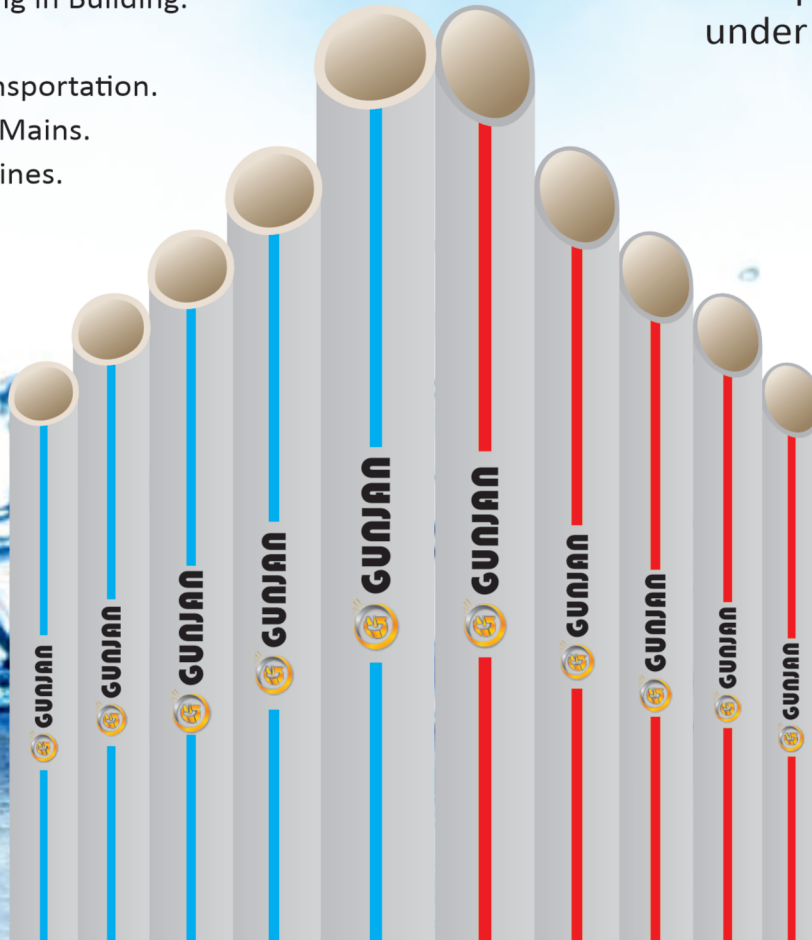
The Complete **Plumbing** Solution

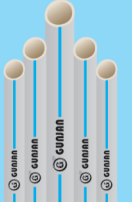
## uPVC PIPES & FITTINGS FOR COLD WATER

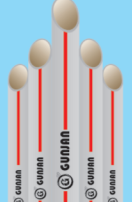
**Application :**

- Cold Water Plumbing in Building.
- Swimming Pools.
- Corrosive Fluid Transportation.
- Water Distribution Mains.
- Industrial Process Lines.

One Stop for multiple plumbing solution under one roof



	Sch- 40-3 Mtr.		
	Size MM	Size Inch	Std. Packaging
	15	1/2"	50
	20	3/4"	40
	25	1"	25

	Sch- 80-3 Mtr.		
	Size MM	Size Inch	Std. Packaging
	15	1/2"	50
	20	3/4"	40
	25	1"	25

PRODUCT FEATURES:



Light Weight



Non Toxic



UV Resistant



Effective Cost



Lead Free



Easy to Install



Cold Water Suit.

## uPvc Column Pipes

### ECO ORANGE SCREEN - A TYPE (150 FEET)

Size inch	NB mm	OD mm	Packing Qty.	DP Kg/cm <sup>2</sup>
1"	25	33	25	12
1¼"	32	42	25	12
1½"	40	48	20	12
2"	50	60	10	13

### ECO ORANGE SCREEN - B TYPE (250 FEET)

Size inch	NB mm	OD mm	Packing Qty.	DP Kg/cm <sup>2</sup>
1"	25	33	25	13
1¼"	32	42	25	13
1½"	40	48	20	15
2"	50	60	10	15

### MEDIUM BLUE SCREEN - A TYPE (250 FEET)

Size inch	NB mm	OD mm	Packing Qty.	DP Kg/cm <sup>2</sup>
1"	25	33	25	13
1¼"	32	42	25	15
1½"	40	48	20	16
2"	50	60	10	16
2½"	65	75	8	12
3"	80	88	5	10
4"	100	113	4	10

### MEDIUM BLUE SCREEN - B TYPE (350 FEET)

Size inch	NB mm	OD mm	Packing Qty.	DP Kg/cm <sup>2</sup>
1"	25	33	25	16
1¼"	32	42	25	16
1½"	40	48	20	16
2"	50	60	10	18
2½"	65	75	8	15
3"	80	88	5	12
4"	100	113	4	12

### HEAVY GREEN SCREEN (750 FEET)

Size inch	NB mm	OD mm	Packing Qty.	DP Kg/cm <sup>2</sup>
1¼"	32	42	25	33
1½"	40	48	20	35
2"	50	60	10	35
2½"	65	75	8	28
3"	80	88	5	26
4"	100	113	4	26

### STANDARD RED SCREEN - B TYPE (600 FEET)

Size inch	NB mm	OD mm	Packing Qty.	DP Kg/cm <sup>2</sup>
1¼"	32	42	25	26
1½"	40	48	20	26
2"	50	60	10	28
2½"	65	75	8	18
3"	80	88	5	17
4"	100	113	4	16

### SUPER HEAVY GREEN SCREEN (1300 FEET)

Size inch	NB mm	OD mm	Packing Qty.	DP Kg/cm <sup>2</sup>
2"	50	60	10	42
2½"	65	75	8	42
3"	80	88	5	35
4"	100	113	4	35



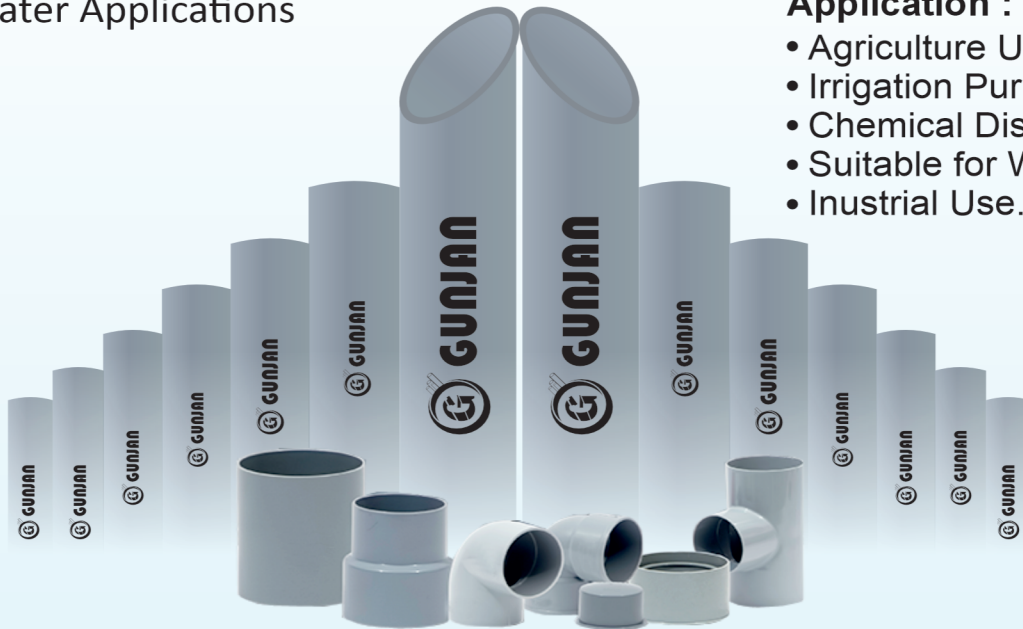


## PVC Agri Pressure Pipes & Fittings

For Cold Water Applications

### Application :

- Agriculture Use.
- Irrigation Purpose Use.
- Chemical Distribution.
- Suitable for Water Distribution.
- Industrial Use.



## Agri PVC Pressure Pipe Specification As Per is : 4985-2021 ISI SERIES

Nominal Outside Diameter (Nominal Size)	Mean Outside Diameter		Outside Diameter at any point		Working pressure, mpa																	
					Class 1 0.25			Class 2 0.40			Class 3 0.60			Class 4 0.80			Class 5 1.00			Class 6 1.25		
	Min	Max	Min	Max	Avg. Max	Min	Max	Avg. Max	Min	Max	Avg. Max	Min	Max	Avg. Max	Min	Max	Avg. Max	Min	Max	Avg. Max	Min	Max
(1)	(2)	(3)	(4)	(5)	(6)	(7)	(8)	(9)	(10)	(11)	(12)	(13)	(14)	(15)	(16)	(17)	(18)	(19)	(20)	(21)	(22)	(23)
20	20.0	20.3	19.5	20.5													1.5	1.1	1.5	1.8	1.4	1.8
25	25.0	25.3	24.5	25.5										1.6	1.2	1.6	1.6	1.4	1.8	2.1	1.7	2.1
32	32.0	32.3	31.5	32.5										1.9	1.5	1.9	2.2	1.8	2.2	2.7	2.2	2.7
40	40.0	40.3	39.5	40.5							1.8	1.4	1.8	2.2	1.8	2.2	2.7	2.2	2.7	3.3	2.8	3.3
50	50.0	50.3	49.4	50.6							2.1	1.7	2.1	2.8	2.3	2.8	3.3	2.8	3.3	4.0	3.4	4.0
63	63.0	63.3	62.2	63.8				1.9	1.5	1.9	3.7	2.2	2.7	3.3	2.8	3.3	4.1	3.5	4.1	5.0	4.3	5.0
75	75.0	75.3	74.1	75.9				2.2	1.8	2.0	3.1	2.6	3.1	4.0	3.4	4.0	4.9	4.2	4.9	5.9	5.1	5.9
90	90.0	90.3	88.9	91.1	1.7	1.3	1.7	2.3	2.1	2.6	3.7	3.1	3.7	4.6	4.0	4.6	5.7	5.0	5.7	7.0	6.1	7.1
110	110.0	110.4	108.6	111.4	2.0	1.6	2.0	3.0	2.5	3.0	4.3	3.7	4.35	5.6	4.9	5.6	7.0	6.1	7.1	8.5	7.5	8.7
125	125.0	125.4	123.5	126.5	2.2	1.8	2.2	3.4	2.9	3.4	5.0	4.3	5.0	6.4	5.6	6.4	7.8	6.9	8.0	9.6	8.5	9.8
140	140.0	140.5	138.3	141.7	2.4	2.0	2.4	3.8	3.2	3.8	5.5	4.8	5.5	7.2	6.3	7.3	8.7	7.7	8.9	10.7	9.5	11.0
160	160.0	160.5	158.0	162.0	2.8	2.3	2.8	4.3	3.7	4.3	6.3	5.4	6.2	8.2	7.2	8.3	9.9	8.8	10.2	12.2	10.9	12.6
180	180.0	180.6	177.8	182.2	3.1	2.6	3.1	4.9	4.2	4.9	7.0	6.4	7.1	9.2	8.0	9.2	11.1	9.9	11.4	13.7	12.2	14.1
200	200.0	200.6	197.6	202.4	3.4	2.9	3.4	5.3	4.6	5.3	7.7	6.8	7.9	10.0	8.9	10.3	12.3	11.0	12.7	15.2	13.6	15.7
225	225.0	225.7	222.3	227.7	3.9	3.3	3.9	6.0	5.2	6.0	8.6	7.6	8.8	11.2	10.0	11.5	13.9	12.4	14.3	17.1	15.3	17.6

## AGRICULTURE PIPES & FITTINGS



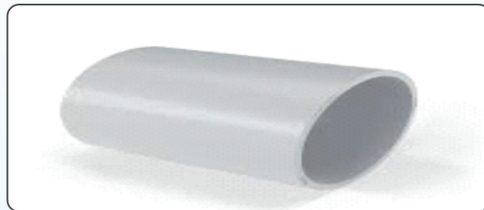
**ELBOW**

Size (mm)	Size (Inch)	BOX	M.R.P.
40	1¼"	350	21.50
50	1½"	200	32.50
63	2"	220	33.00
75	2½"	150	38.50
90	3"	80	55.00
110	4"	45	95.00



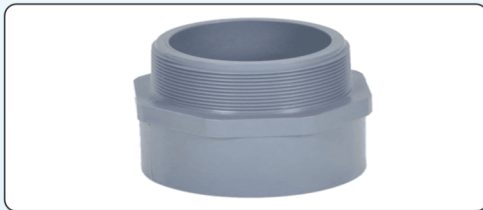
**TEE**

Size (mm)	Size (Inch)	BOX	M.R.P.
40	1¼"	200	30.50
50	1½"	125	44.00
63	2"	110	41.50
75	2½"	75	50.50
90	3"	50	67.00
110	4"	28	125.00



**COUPLER**

Size (mm)	Size (Inch)	BOX	M.R.P.
40	1¼"	600	16.00
50	1½"	300	21.00
63	2"	200	32.00
75	2½"	120	44.50
90	3"	100	48.50
110	4"	80	69.50



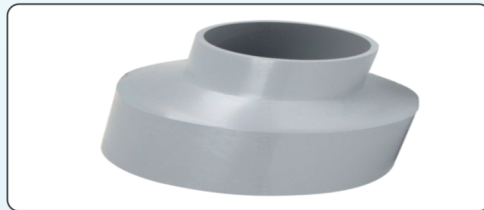
**M.T.A.**

Size (mm)	Size (Inch)	BOX	M.R.P.
40	1¼"	200	20.00
50	1½"	150	29.00
63	2"	100	34.00
75	2½"	80	54.00
90	3"	60	87.00
110	4"	50	129.50



**F.T.A.**

Size (mm)	Size (Inch)	BOX	M.R.P.
40	1¼"	150	21.50
50	1½"	100	29.50
63	2"	100	46.00
75	2½"	70	67.50
90	3"	40	105.50
110	4"	30	169.00



**REDUCER**

Size (mm)	Size (Inch)	BOX	M.R.P.
90X63	3"x2"	84	48.50
90X75	3"x2½"	84	50.50
110X63	4"x2"	120	70.00
110X75	4"x2½"	120	70.50
110X90	4"x3"	120	72.00



**SHOE BAND**

Size (mm)	Size (Inch)	BOX	M.R.P.
40	-	-	-
50	1½"	225	23.00
63	-	-	-
75	2½"	75	49.50
90	3"	80	63.00
110	4"	44	100.00



**PLAIN END CAP**

Size (mm)	Size (Inch)	BOX	M.R.P.
40	1¼"	500	19.00
50	1½"	400	22.50
63	2"	350	28.50
75	2½"	220	37.50
90	3"	130	55.00
110	4"	120	82.50



**P-TRAP**

Size (mm)	Size (Inch)	BOX	M.R.P.
110x110	4"x4"	18	242
125x110	4.5"x4"	18	253



**NAHANI TRAP**

Size (mm)	Size (Inch)	BOX	M.R.P.
110x75	4"x2½"	55	112.50
110x90	4"x3"	45	121.00
110x110	4"x4"	40	137.50



**ELBOW ISI**

Size (mm)	KG	BOX	M.R.P.
40	6 KG.	350	21.50
50	6 KG.	200	32.50
63	6 KG.	220	38.50
75	6 KG.	105	63.00
90	6 KG.	60	104.50
110	6 KG.	38	163.00
140	6 KG.	16	333.00
160	6 KG.	12	442.00



**VENT COWL**

Size (mm)	Size (Inch)	BOX	M.R.P.
75	2½"	275	25.00
110	4"	220	43.00



**TEE ISI**

Size (mm)	KG	BOX	M.R.P.
40	6 KG.	200	30.50
50	6 KG.	125	44.00
63	6 KG.	110	64.00
75	6 KG.	105	88.00
90	6 KG.	45	128.00
110	6 KG.	26	181.50
140	6 KG.	12	425.00
160	6 KG.	12	599.50

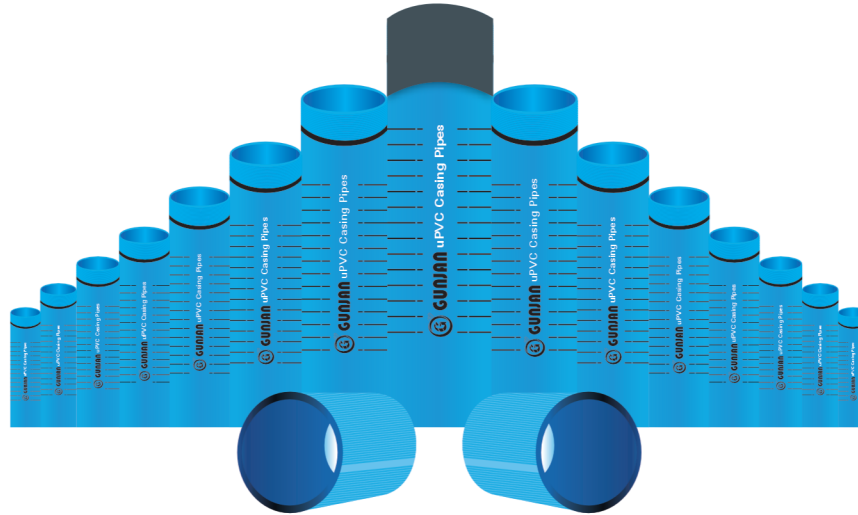
## Electric Conduit Pipes & Casing N Capping



CONDUIT PIPE 25 MM	Weight	CASING N CAPPING	Weight
			Per Bunle
SUPERLIGHT	8.5 KG (25 PIPES)	32x16	30 KG (100 PCS)
LIGHT	10 KG (25 PIPES)	Shock Resistant                      Easy to Install                      No Corrosion	Long Life                      Fire Retardant                      Electrician Friendly to use
MEDIUM	12 KG (25 PIPES)		
HEAVY	14 KG (25 PIPES)		
SUPER HEAVY	16 KG (25 PIPES)		



## Casing & Ribbed Screen Pipes



**Table 1 Dimensions of Shallow Well Casing (CS) Pipes**

Nominal Diameter mm/inch	Minimum Outside Diameter of Pipe		Outside Diameter of Pipe at Any Point		Wall Thickness		Outside Diameter Over Connection
	Min	Max	Min	Max	Min	Max	Max
150/6"	165.00	165.40	164.60	165.60	5.70	6.50	174.00
175/7"	200.00	200.50	199.60	200.60	7.00	7.80	211.00
200/8"	225.00	225.50	224.50	225.80	7.60	8.80	238.00

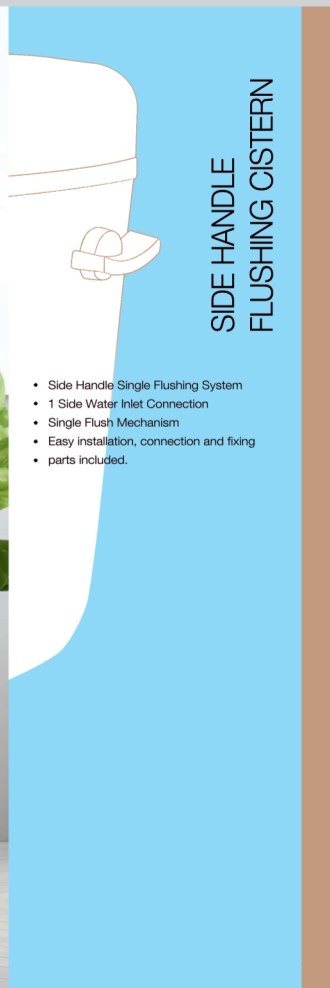
**Table 2 Dimensions Medium Well Casing (CM) Pipes**

Nominal Diameter mm/inch	Minimum Outside Diameter of Pipe		Outside Diameter of Pipe at Any Point		Wall Thickness		Outside Diameter Over Connection
	Min	Max	Min	Max	Min	Max	Max
35/1.¼"	42.00	42.20	41.90	42.30	3.50	4.00	46
40/1.½"	48.00	48.20	47.90	48.30	3.50	4.00	52
50/2"	60.00	60.20	59.90	60.30	4.00	4.60	65
80/3"	88.00	88.30	87.90	88.40	4.00	4.60	94
100/4"	113.00	113.30	112.90	113.40	5.00	5.70	120
115/4.½"	125.00	125.30	124.90	125.40	5.00	5.70	132
125/5"	140.00	140.40	139.90	140.50	6.50	7.30	150
150/6"	165.00	165.40	164.60	165.60	7.50	8.50	178
175/7"	200.00	200.50	199.60	200.60	8.80	9.80	215
200/8"	225.00	225.50	224.50	225.80	10.0	11.20	243

**Table 3 Dimensions Medium Well Screen (RMS) Pipes with Ribs**

Nominal Diameter mm/inch	Mean Outside Diameter of Pipe		Outside Diameter of Pipe at Any Point		Wall Thickness		Outside Diameter Over Connection
	Min	Max	Max		Min	Max	Max
35/1.¼"	46.00	46.20	45.90	46.30	3.50	4.00	50
40/1.½"	52.00	52.00	52.90	52.30	3.50	4.00	56
50/2"	64.00	64.20	63.90	64.30	4.00	4.60	69
80/3"	92.00	92.30	91.80	92.40	4.00	4.70	98
100/4"	117.00	117.30	116.80	117.40	5.00	5.70	124
115/4.½"	129.00	129.30	128.80	128.40	5.00	5.70	136
125/5"	144.00	144.40	143.70	144.50	6.50	7.30	154
150/6"	169.00	169.40	168.60	169.60	7.50	8.50	182

## Cistern & Toilet Seat Cover



Unique Space Design	Water Saving	Hassle Free Installation	Corrosion Resistant	Attractive Flush Plate Design

### CISTERNS

	<b>Model</b>	<b>MRP (Rs.) GST PAID</b>		<b>Model</b>	<b>MRP (Rs.) GST PAID</b>
	Silver	849.00		Gold	1049.00

	<b>Model</b>	<b>MRP (Rs.) GST PAID</b>
	Pearl	1449.00

### TOILET SEAT COVER

	<b>Model</b>	<b>MRP (Rs.) GST PAID</b>		<b>Model</b>	<b>MRP (Rs.) GST PAID</b>
	Silver	499.00		Pearl	699.00

• The above Prices are GST Paid.  
• The above Prices are Ex-Factory AGRA (U.P.)

## Kitchen Sinks

Made with stainless steel



Sink	Model Name	Size	M.R.P (Rs.)
	Square	24X18X9	2199
	Square	16X18X8	1899
	Oval	24X18X9	1999
	Oval	16X18X8	1699

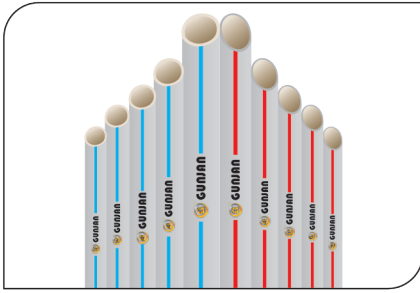
The above Prices are GST Paid.  
The above Prices are Ex-Factory Basis.



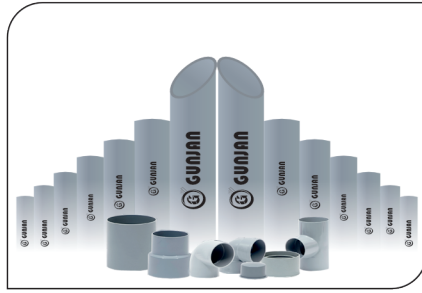


# GUNJAN<sup>TM</sup>

Our Plastic Speaks Itself



uPVC Plumbing Pipes



Agri Pipes & Fittings



uPVC Column Pipes



Kitchen Sinks



Cistern



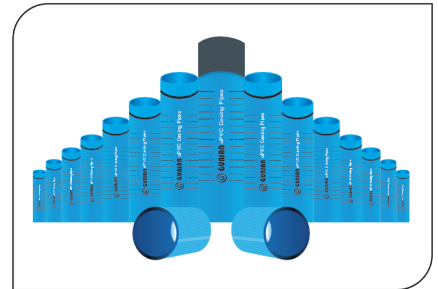
Electric Conduit Pipes



Casing & Capping



Toilet Seat Covers



Casing Pipes & Ribbed Screen

uPVC Pipe & Fittings, Agri Pipe & Fittings, Casing Pipe Ribbed Screen pipes, Electric Conduit Pipes & Casing N Capping, uPVC Column Pipes, Cistern & Toilet Seat Cover, Kitchen Sinks.

Manufacturing Unit:

**Gunjan Polyplast**

[gunjanpolyplast@gmail.com](mailto:gunjanpolyplast@gmail.com) [www.gunjanpolyplast.co.in](http://www.gunjanpolyplast.co.in)

Agra Uttar Pradesh -283126 7055333301, 7055333302

Dealer / Distributor :

